

Creating a fair, sustainable future for Australia and the region

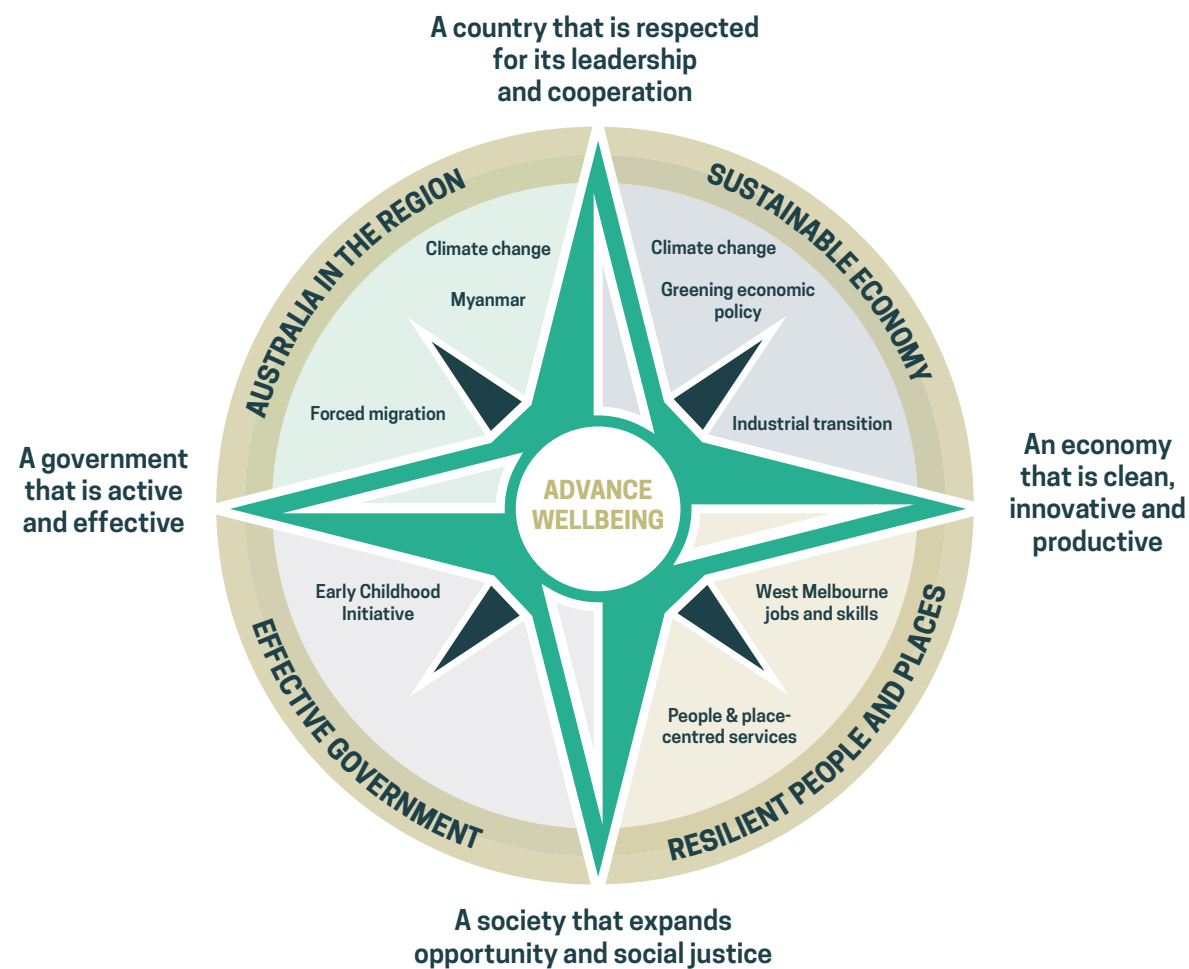


**DRIVEN BY
VALUES, GUIDED
BY EVIDENCE**

**HOW FIRM BELIEFS AND RIGOROUS
RESEARCH SHAPE OUR WORK**

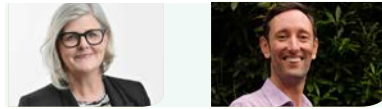












CPD's work is driven by values, empowered by our method, and guided by evidence - including from the participation of people affected by policies.

At the centre of our work is the principle that public policy should advance the wellbeing of current and future generations.



These beliefs shape our strategic goals and ways of working. We work and walk with organisations and individuals, large and small, who share these values and have an interest in crafting solutions to our most pressing challenges.

CONTENTS

	Foreword	4
	Impact Highlights	6
	Our Method	10
	Wellbeing	12
	John Menadue Oration	14
	Resilient People & Places	16
	Early Childhood Development	18
	The Voice	20
	Sustainable Economy	22
	Australia & the Indo-Pacific	24
	Cross Program Work	26
	The CPD Way	28
	Our Supporters	31

A WORD FROM THE CHAIR AND CEO



Sam Mostyn AO

Chair

"This report covers 12 months, but the impact of the work will last decades."

Australia faces new opportunities and challenges. Very soon we will exercise our power as citizens in voting in a Referendum on Constitutional recognition and a Voice to Government for First Nations. Women, young people and diverse, engaged communities are changing our electoral map and public institutions. We now have - for the first time in decades - a credible path to a sustainable low carbon economy.

Leaders across business, government and philanthropy are embracing collaborative ways of working. They have seen that policy works when it is designed in concert with the people whose lives it touches. They are seeking lenses for long-term decision-making, pursuing more advanced models of progress that centre people and planet, now and for future generations.

It is a great privilege to chair the Centre for Policy Development where we have pioneered innovative models of co-creating policy, through our Create-Connect-Convince model. It has been nearly a decade since CPD convened its first roundtables on migration, and its public seminar series on climate change and the economy. In more recent years that has broadened to early education & care, and wellbeing economics. Even as bitter division dominated national discourse, CPD brokered good faith dialogue between disparate actors to create practical solutions to the most pressing issues facing Australia and the region.

Today the value of that persistent, purposeful work is clear. The reform agenda - from migration and employment to early childhood and climate - rests on a foundation of this vital work. Of course, there is so much more to do, and the need for practical long-term solutions that deliver wellbeing has never been more acute.

Core to our mission at CPD is forging innovative systems change. We are committed to ensuring that Australia meets and exceeds the next horizon for carbon reductions; pioneers the best design for universal early childhood services; and commits to the respectful, effective connections between governments and local communities. Our ambition is for new governing principles for social progress to advance what matters, for good, for all.

At CPD, we are very proud to share our Impact Report. Whilst it only covers the past 12 months, we know the impact of the work will last decades. We couldn't achieve our unique and important impact without the generous financial support of so many, and we thank them for their continued engagement. On behalf of CPD's board I invite and encourage you considering us and adding your support to our work.

Thank you

Andrew Hudson

CEO

"A seismic shift in the policy landscape presents a tremendous opportunity for change."



Looking back over the last 12 months, I am incredibly proud of the impact our small team has made on the policy agenda across a wide range of domains. Australia and the region are experiencing a seismic shift in the policy landscape, and this presents a tremendous opportunity for transformative, enduring systemic change. The Federal Government is committed to an expansive policy change agenda. The private sector and civil society are also reimagining central societal compacts.

In this environment CPD is in a unique position to guide Australia to a fair, sustainable and inclusive future:

- » Our Wellbeing Initiative has driven ambition for better ways to set goals and measure progress for Australia, with key impact on the Federal Budget and close collaboration with Treasury.
- » Our Sustainable Economy Program has helped bring about new mandatory climate disclosure rules and the creation of the Net Zero Authority. Now it's developing the bold targets for 2035 needed to keep warming below 1.5 degrees.
- » Through the Asia Dialogue on Forced Migration we helped to activate a regional emergency response to the Myanmar crisis this year.
- » Our Early Childhood Development Initiative helped to secure once-in-a-generation State and Federal reforms and investments totalling more than \$50 billion in the wellbeing of children, their families and the nation.

CPD's cross-program work is truly distinctive, for example, our work on energy transition in Indonesia and Australia has helped to influence the G20 and ASEAN agenda.

The success of this innovative model powered by trust has been a key catalyst in CPD's substantial growth. In just two years CPD's income has grown from \$1.9 million to \$3.5 million, our team has more than doubled to 25, and we now have a presence in Melbourne, Canberra, Sydney, and Jakarta.

In this impact report, you'll see a snapshot of CPD's collaborative approach, our expertise, and our unwavering commitment to our core values. I want to thank everyone that has supported CPD over the last year. The steps our country and region have taken towards a better future belong to you.

Thank you,

HIGHLIGHTS

This year CPD's work has built powerful alliances and driven critical reforms to move Australia and the region towards a future defined by wellbeing.



JUNE 2022
 CPD announces Wellbeing Government Initiative to build Australian wellbeing framework
Future Ready report shows path to durable, dignified regional response to forced migration through key Bali Process reforms

JULY 2022
 NSW and Victoria announce \$20 billion investment in early childhood system, guided by CPD and Early Childhood Development Council research and advocacy
Starting Now lays out first steps to universal early childhood system, endorsed by BCA, Chief Executive Women and National Children's Commissioner

SEPTEMBER 2022
 Early childhood tops agenda at Jobs and Skills Summit, in line with CPD advice in *Starting Now*
 Commonwealth extends paid parental leave to 26 weeks in line with Starting Better guarantee



JULY 2022
 CPD hosts G20 event on climate transition financing addressed by Indonesian Vice-President Ma'ruf Amin



SEPTEMBER 2022
 CPD publishes *Principles for an Effective Wellbeing Budget*
Raising the Bar report recommends climate risk regime apply to public authorities



AUGUST 2022
Redefining Progress sets foundation for Australian wellbeing approach



OCTOBER 2022
 Federal Budget announces Australia's first wellbeing framework based on CPD work

NOVEMBER 2022
 CPD welcomes Sam Mostyn as Chair, thanks Terry Moran for his tireless service
 Federal Minister for Early Childhood Dr Anne Aly and Social Services Minister Amanda Rishworth address CPD's Early Childhood Development Council on their vision for the early years, crediting CPD and council work for driving bold reform agenda

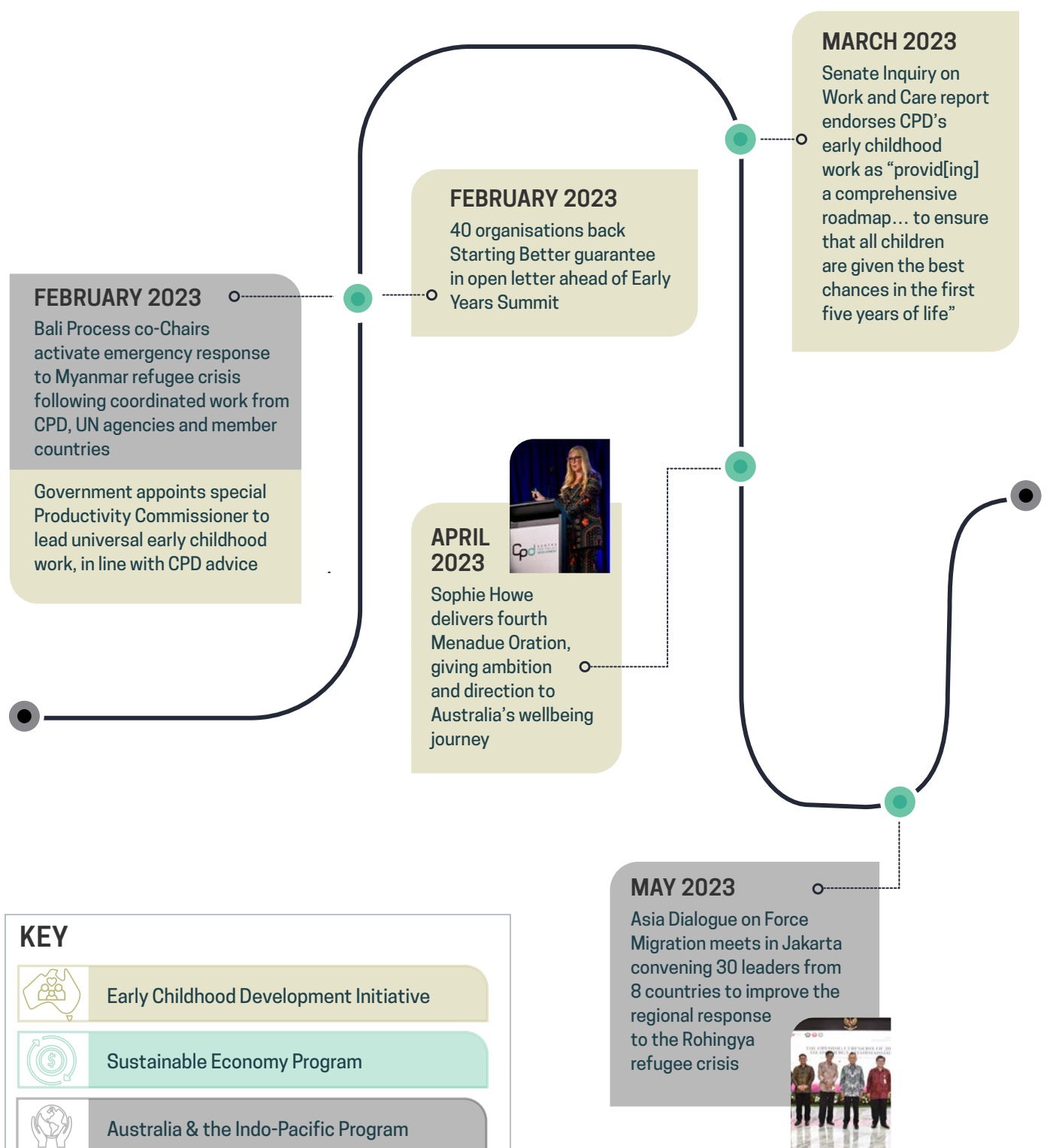


DECEMBER 2022
 CPD launches Climate 2035 Initiative to take bold, practical steps to achieve decarbonisation targets

DECEMBER 2022
 Federal Treasurer announces climate risk "mandatory disclosures" regime in line with CPD recommendations

KEY	
	Early Childhood Development Initiative
	Sustainable Economy Program
	Australia & the Indo-Pacific Program
	Wellbeing Initiative

HIGHLIGHTS



FEBRUARY 2023
 Bali Process co-Chairs activate emergency response to Myanmar refugee crisis following coordinated work from CPD, UN agencies and member countries

Government appoints special Productivity Commissioner to lead universal early childhood work, in line with CPD advice

FEBRUARY 2023
 40 organisations back Starting Better guarantee in open letter ahead of Early Years Summit

APRIL 2023
 Sophie Howe delivers fourth Menadue Oration, giving ambition and direction to Australia's wellbeing journey

MARCH 2023
 Senate Inquiry on Work and Care report endorses CPD's early childhood work as "provid[ing] a comprehensive roadmap... to ensure that all children are given the best chances in the first five years of life"

MAY 2023
 Asia Dialogue on Force Migration meets in Jakarta convening 30 leaders from 8 countries to improve the regional response to the Rohingya refugee crisis

KEY

-  Early Childhood Development Initiative
-  Sustainable Economy Program
-  Australia & the Indo-Pacific Program
-  Wellbeing Initiative

BY THE NUMBERS

7
LANDMARK RESEARCH REPORTS

Driving reform across climate, social policy, economic policy and diplomacy

6
POWERFUL COLLABORATION FORUMS

Uniting more than 150 decision-makers, ministers, CEOs and experts

150+
PRIVATE BRIEFINGS

With cabinet ministers, industry leaders, diplomats and public officials

923
MEDIA PIECES

Defining the narrative on Australia and the region

\$50 BILLION +
INVESTMENT IN KEY REFORMS

New public investment in key reforms that advance wellbeing across states and Commonwealth

1ST
FUTURE GENERATIONS COMMISSIONER

World's first Future Generations Commissioner delivers John Menadue Oration

2
GLOBAL PARTNERSHIPS

G20 and ASEAN engage CPD as energy partner

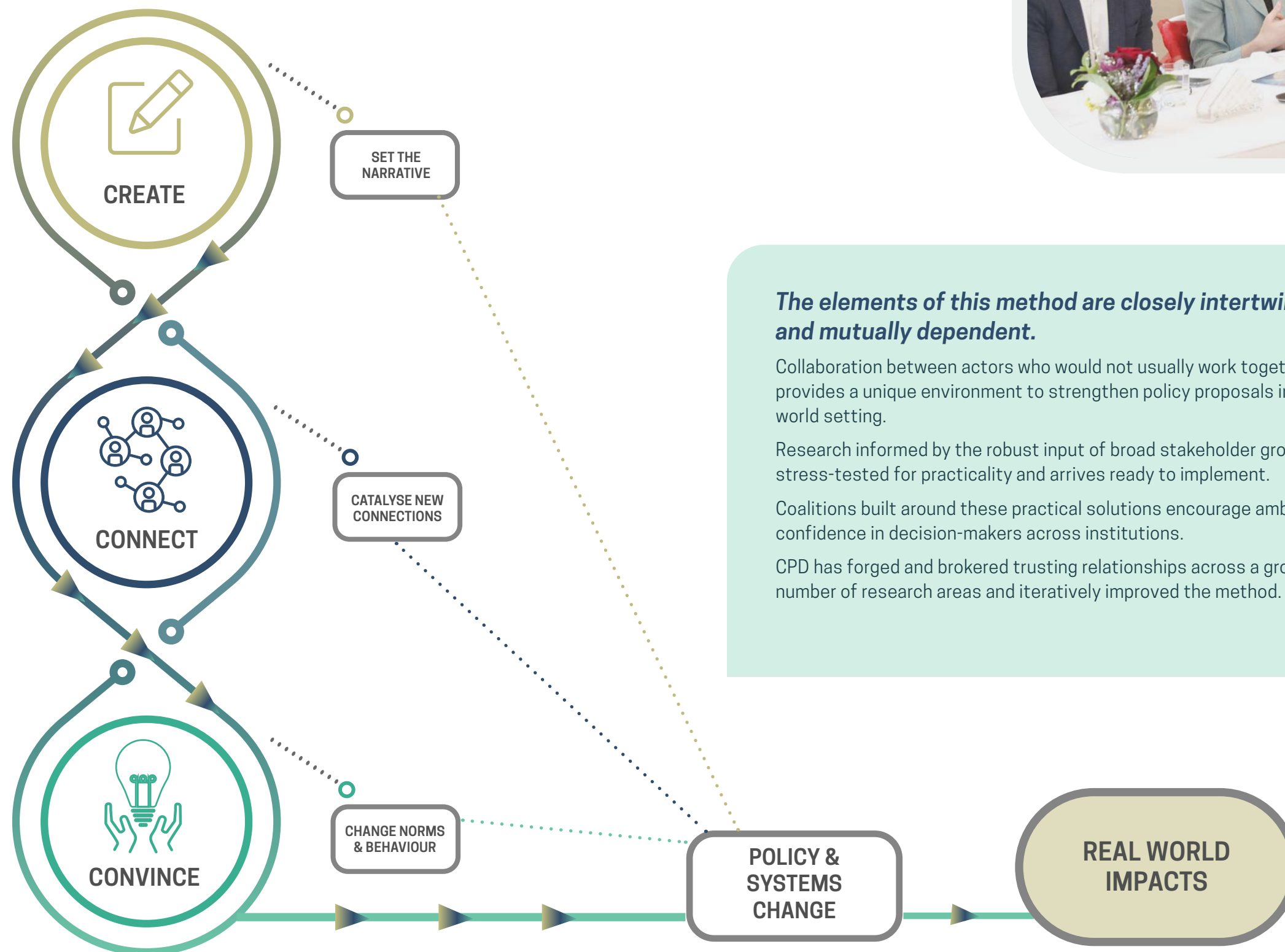
**CREATE.
CONNECT.
CONVINCE**

FORGING PRACTICAL SOLUTIONS TO INTRACTABLE CHALLENGES WITH OUR UNIQUE METHOD

We **CREATE** practical solutions from rigorous, cross-disciplinary research guided by values and evidence.

We **CONNECT** stakeholders and decision-makers across government, business, academia, NGOs and civil society.

We **CONVINCE** leaders to take bold action that unlocks multi-dimensional progress by adopting these solutions.



The elements of this method are closely intertwined and mutually dependent.

Collaboration between actors who would not usually work together provides a unique environment to strengthen policy proposals in a real-world setting.

Research informed by the robust input of broad stakeholder groups is stress-tested for practicality and arrives ready to implement.

Coalitions built around these practical solutions encourage ambition and confidence in decision-makers across institutions.

CPD has forged and brokered trusting relationships across a growing number of research areas and iteratively improved the method.





PUTTING PEOPLE FIRST FOR A BETTER TOMORROW
Wellbeing Initiative

Leading the charge for decision-making that meets the needs of people and planet

Most people agree that the wellbeing of current and future generations is a primary purpose of government. But getting there contains challenges that legacy toolkits do not equip us for.

Our Wellbeing Initiative builds wellbeing into decision-making in Australian institutions. This year we have made significant progress, and interest in wellbeing approaches is surging across the country.

CHARTING THE COURSE

In August our *Redefining Progress* report examined 21 global wellbeing approaches from the past 50 years, and identified four essential characteristics for Australia's own wellbeing journey.

A key recommendation was to proactively measure what matters to Australians. This recommendation is reflected in the proposed national wellbeing framework, a major milestone on Australia's wellbeing journey. We have closely advised the Federal government throughout the development and consultation of Treasury's Measuring What Matters framework.

Our guiding principles for wellbeing budgeting informed Treasurer Jim Chalmers' first budget, which included a dedicated wellbeing chapter citing CPD's work alongside the OECD, and included a commitment to expanding how progress is measured beyond legacy economic indicators.

As the ambition and scope of Australia's wellbeing approach evolves we are providing evidence-backed and decisive direction to key decisions throughout government and beyond.

CONNECTING LEADERS AND DECISION MAKERS

Our flagship event, the John Menadue Oration, was delivered by Sophie Howe, the inaugural Future Generations Commissioner of Wales. (see page 14 for more details)

The CPD Wellbeing Government Roundtables and our work as co-chair of the Wellbeing Economy Alliance (WEAll) Australia Hub have fostered innovative connections, shared best practice amongst the wellbeing economy community in Australia.

THE AUSTRALIAN

Treasury gets to What Matters

PATRICK COMMINS
ECONOMICS
CORRESPONDENT

Treasury is set to publish more than 160 submissions received as part of its development of a national framework on "wellbeing", ahead of the likely mid-year release of the inaugural Measuring What Matters statement.

Based on submissions so far, and ahead of a second round of consultations, Australia's inaugural "progress framework" will cover the five broad themes of prosperity, inclusion, sustainability, cohesion and health.

The October budget included a section outlining ideas on alternative ways to measure national progress and prosperity, outside the usual economic indicators such as gross domestic product, unemployment and inflation.

It noted "the objectives of most progress frameworks related to living standards, quality of life, opportunity and meaning". The ob-

the state of our environment, our health or our community," the Treasurer said. "Ultimately this is about how we build a stronger, more resilient economy and country that creates more opportunities for more Australians."

The statement will be based on the OECD's framework for measuring wellbeing and progress, but tailored to the Australian experience. It will complement existing documents, such as the Closing the Gap and State of the Environment reports.

Community groups, unions, businesses, governments and academics are among those who have participated in Treasury's consultation ahead of the planned release of Australia's wellbeing statement in a few months' time.

The most common policy areas concern measuring progress among children, in inequality and poverty, physical and mental health, Indigenous Australians, and the environment.

Other areas included housing



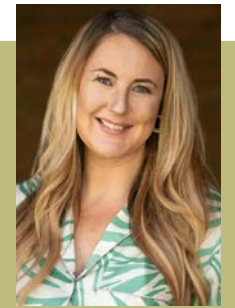
BUILDING THE CASE FOR WELLBEING

CPD's Wellbeing Initiative continues to make strides in promoting wellbeing frameworks to guide government decision making across Australia and the region.

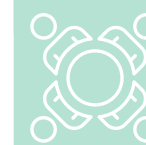
Following further community consultation and the release of the government's standalone Measuring What Matters statement, the team will continue to advise and consult with key stakeholders on the best ways for Australia to place the wellbeing of people, place and the environment at the forefront of government decision-making.

A broad, inclusive national conversation will help define what truly matters to Australians, and help shine a guiding light on where we want to head as a nation.

"CPD's connections to key decision-makers and influencers and the buzz around the wellbeing agenda has made me excited and optimistic about wellbeing starting to be properly rolled out in Australia."



- Sophie Howe, Inaugural Future Generations Commissioner of Wales



Setting direction through roundtables with senior public officials, political leaders and global experts



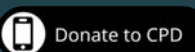
Injecting world-leading ideas with flagship oration on wellbeing in government decision-making



Extending community consultation to guide the government's wellbeing framework

Please consider contributing to our mission, as every contribution is tax-deductible and enables us to make tangible progress in advancing wellbeing-focused policy and ensuring a brighter, more equitable future for all Australians.

Donate to CPD at cpd.org.au/donate





GLOBAL LEADER BOOSTS WELLBEING AMBITION
2023 John Menadue Oration

Delivered by **Sophie Howe**
Inaugural Future Generations Commissioner, Wales

Followed by conversation with **Fiona Stanley AC**



Moderated by **Sam Mostyn AO**



#menadue2023



Inaugural Future Generations Commissioner of Wales, Sophie Howe, is the first public official in the world appointed to guard the interests of future generations.

Appointed in 2016 as part of a program identified by the *Redefining Progress* report as world-leading, Sophie's guidance and challenges to government decision-makers transformed national approaches to transport, planning, environment, health and education.

Her term concluded in January 2023, and on Tuesday 18 April she delivered the fourth John Menadue Oration.

A sold-out Wheeler Centre audience including leaders across government, philanthropy and the private sector heard from Ms Howe, CPD Chair Sam Mostyn, and Professor Fiona Stanley on the Australian path to wellbeing.

The visit took place at a critical juncture, with the Commonwealth government just publishing the nation's first wellbeing framework. Sophie's wisdom

and insights gave shape and direction to a growing alliance of influential people and organisations supporting a national goal-setting conversation in Australia, and built understanding and buy-in across the public service.

CPD facilitated a fortnight of high-level meetings between Ms Howe and key leaders including Federal Treasury Secretary Stephen Kennedy, Federal Ministers and their advisers, the Department of Prime Minister & Cabinet, Children's Commissioner Anne Hollonds and key members of State governments. We also enabled her to appear on Channel 10's *The Project*; ABC TV's Q&A; RN Breakfast; RN Big Ideas and more.

This combination of direct engagement with key figures and public messaging advocacy has played an important role providing direction and shape to Australia's developing wellbeing approach.



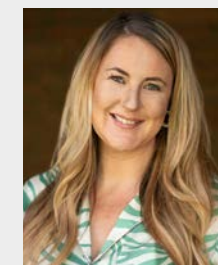
Sophie described a process of deep citizen engagement which captured the soul of Wales, enabling them to plan and work today for a sustainable future for children. Learning more about this model is perfectly timed for Australia if we are to build on the realisation that good government must use our wealth to care for community, not simply chase growth without purpose

- Professor Fiona Stanley AC



THE JOHN MENADUE ORATION

Sophie Howe joins an esteemed group of leaders invited to deliver CPD's flagship address, named after founding chair John Menadue AO.



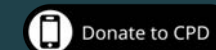
Sophie Howe.

The inaugural address was given in 2018 by former Indonesian Foreign Minister Dr Marty Natalegawa. This was followed in 2019 by an address by Italian-American economist Professor Mariana Mazzucato. In 2020 Indigenous lawyer, academic and member of the Prime Minister's Referendum Council, Professor Megan Davis delivered the address.



Dr Marty Natalegawa, Professor Mariana Mazzucato, Professor Megan Davis,

Our capacity to organise meaningful public events and bring policy experts together with vital decision-makers is made possible by the support of valuable donors. Please consider joining our efforts as a CPD sustainer and contribute, tax-deductible, to our ongoing mission by visiting cpd.org.au/donate





**MAKING PEOPLE AND PLACES
CENTRAL TO GOVERNMENT**
RESILIENT PEOPLE AND PLACES



Transforming government to meet the needs of the people it serves

CPD and our partners are redefining how government supports people, strengthens communities and paves the way for system transformation.

DEMONSTRATING A PEOPLE AND PLACE-CENTRED APPROACH

In partnership with the Brotherhood of St Laurence, CPD launched the Western Melbourne Jobs and Skills Collaboration, uniting training and skills providers, local councils, employers, and regional bodies to combat unemployment, particularly for people facing barriers to employment. This is creating a lasting system in Western Melbourne that connects local people to local opportunities and supports them to thrive.

Our work has already made a significant difference. Our Jobs and Skills Collaboration was referenced in the Interim Economic Inclusion Advisory Committee's report as a model that demonstrates innovation. We are informing renewed efforts, including through the inquiry into Workforce Australia Employment Services, to transform the current employment service system, from fragmented, punitive and unresponsive to a truly people and place-centred system.

AN EMPLOYMENT SYSTEM THAT WORKS

Drawing on our work on people and place-centred approaches to employment services, early childhood development and a just transition to a zero carbon economy, we outlined a holistic vision to advance full employment in Australia and to build a bigger, better-trained and more productive workforce.

We urged:

- » universally accessible high-quality early childhood education and care,
- » investing in emerging industries and diversifying our exports in a way that puts climate-affected people and communities first;
- » scaling up regional and community job deals - place-based approaches to jobs and skills; and
- » identifying a number of place-based investment sites to demonstrate new approaches to policy, implementation and service system design and delivery.

We have seen the Federal government address these priorities through the Budget, regulation and their legislative agenda.

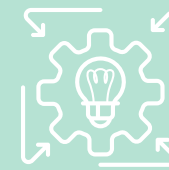
NATIONAL AMBITIONS FOR PEOPLE AND PLACE

People and place-centred policy has won support at a national level with three separate announcements in the 2023 budget backing mission-based, people and place-centred models with funding of more than \$250 million.

The Investment Dialogue for Australia's Children, the Stronger Places, Stronger People program and the Social Impact Outcomes Fund are important investments for Australia's future and build on the evidence and policy ideas that CPD and our partners have created through years of practical work.

It is wonderful to see this interest in transformative approaches and CPD looks forward to helping to guide reforms of Australia's service systems, renewal of our public service culture, and restore our national capability in ways that put people and place at the centre of government.

The surge of interest in an area of specialist expertise for CPD positions us to guide urgent reforms of Australia's service systems, renewal of our public service culture, and restore our national capability in ways that put people and place at the centre of government.



Building local jobs deals to capture opportunities for people and communities facing disadvantage by uniting industry, government, academia and service providers



Key State and Commonwealth reforms covering employment, migration and settlement, to better serve and enable people experiencing disadvantage



Detailed blueprints to scale people- and place-centred models at a state and national level



'Thank you for your ongoing collaboration through this year. We have valued working with CPD in developing the thinking to improve local jobs & skills systems.'

-Carolyn Atkins, Senior Manager, Place-Based Approaches at Victorian Department of Jobs, Skills, Industry & Regions,

A MIGRATION SYSTEM FOUNDED IN PERMANENCY

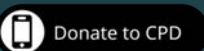
We have made submissions to government on how to strengthen migration to build our nation, boost cultural diversity, and embed social cohesion. This guidance is streamlining processes, adopting people- and place-centred approaches, and helping new migrants into decent work.

As Australia replaces a fragmented temporary migration system with pathways to permanency, our work provides a policy foundation for a principled, holistic system benefitting migrants and the communities that welcome them.



We welcomed Program Director, Cliff Eberly in November. Cliff's experience in community development, engagement, and economic and social inclusion is invaluable to the program.

Help us build resilient, strong communities. Donate to CPD at cpd.org.au/donate to support migrant settlement, rewarding work, and community support. Every contribution is tax-deductible and makes a positive impact.





MAKING AUSTRALIA THE BEST PLACE TO BE A CHILD AND RAISE A FAMILY

Early Childhood Development Initiative

Delivering the Guarantee for Young Children and Families

CPD's Early Childhood Development Initiative has built consensus across business, academia, government and civil society on a universal Guarantee for Young Children and Families to give all children in Australia the best start to life.

Alongside partners and the ECD Council, we are working closely with decision-makers and the sector to sequence and connect vital reforms delivering *Starting Better's* Guarantee.

NATIONAL MOMENTUM

At a Commonwealth level, key components of the guarantee have been delivered, including new legislation to expand paid parental leave to 26 weeks and billions of dollars of investment to boost early education and care subsidies for families and make childcare more accessible.

CPD has engaged with other significant reform efforts too - the Productivity Commission is examining models for universal early education and care, the ACCC is conducting an inquiry into childcare pricing, and the National Early Years Strategy will provide national direction.

The terms of reference for the Productivity Commission emphasise the Commonwealth's commitment to "universal, affordable ECEC - in the great tradition of universal Medicare and universal superannuation," and an independent special commissioner was appointed to the inquiry, in line with CPD's recommendation.

In February 2023, 40 organisations signed an open letter supporting the Guarantee, with a legislated right to universally accessible, high-quality early childhood education and care at its core.

Two key government advisory bodies - the Women's Economic Equality Task Force and the Economic Inclusion Advisory Panel - both recommended universal, quality early education and care as a high-priority economic reform alongside other components of the Guarantee.

The final report from the Senate Select Committee on Work and Care included a section on the *Starting Better* Guarantee.



PM gives commitment to universal early education and care on the eve of his election

The guarantee for young children and families, as developed and put forward by the Centre for Policy Development in its *Starting Better* report, provides a comprehensive roadmap to implement change and to ensure that all children are given the best chances in the first five years of life.

- *Final Report of the Senate Select Committee on Work and Care*

National Cabinet is collaborating on a shared vision for early education and care that supports children, their families, care workers and the country.

This will support collaborative reforms between the Commonwealth and States to deliver an election-eve commitment by the incoming Prime Minister to universal early education and care.

TO THE AUSTRALIAN GOVERNMENT



LEGISLATION NEEDED TO HELP EVERY CHILD START BETTER

All Australian children deserve the best start in life and it's up to us to make that happen.

The National Early Years Summit in Canberra on 17 February must be bold.

Overwhelming evidence shows the first five years of a child's life can set them up for lifelong learning and resilience or disadvantages.

The Summit must commit to a new guarantee for every Australian child, bound by legislation and operationalised by a new Commonwealth and State early childhood body.

This guarantee should have universally accessible, high quality early childhood education and care as its backbone.

It must ensure that Aboriginal and Torres Strait Islander children and families have access to community controlled, culturally appropriate services.

And it must ensure every family in Australia has access to:

- infant and maternal health care;
- comprehensive family support, including playgroups and inclusive community-based disability support; and
- at least two years of preschool.

We will only get these outcomes for children with a highly skilled and well paid workforce.

This is a once-in-a-lifetime opportunity, we urge you to be bold and lay the foundations for a new approach to the early years.

SIGN OUR OPEN LETTER.



"CPD has been a leading voice in promoting the value of investment in early education to give our children the best start in life. Your work showed the generational economic impact of investment in child care."



- Matt Kean, former NSW Treasurer

STATE DEVELOPMENTS

The NSW and Victorian Governments drew heavily on the work of CPD and Council members to make landmark investments and agree to 30 hours a week of fully subsidised preschool over the next decade at a cost of \$16 billion alone for NSW. The governments' once-in-a-generation investment in early education and care, recognised its importance as critical social infrastructure.

The interim report of the South Australian Royal Commission recommended the core elements of the Guarantee as the ideal end state of the early childhood system, and ECD Council co-Chair Leslie Loble sat on the expert panel advising the Royal Commission.

40 national organisations back our Guarantee ahead of Early Years Summit

\$19.4 billion investment in early childhood across State and Federal Governments

Your contributions are essential for our ongoing efforts to develop an early childhood system that nurtures thriving children and families. Please join our cherished circle of sustainers by donating, tax-deductible, to CPD at cpd.org.au/donate.



Donate to CPD

“CPD’s work has repeatedly shown that public policy works best when all the voices of those experiencing the policy are heard in the process of its design and implementation.”



**THE
VOICE**

CPD SUPPORTS YES VOTE ON VOICE

The Centre for Policy Development (CPD) supports a Voice for Aboriginal and Torres Strait Islander people and supports a Yes vote in the 2023 referendum.

CPD’s work has repeatedly shown that public policy works best when all the voices of those experiencing the policy are heard in the process of its design and implementation.

The Voice is a key objective of the Uluru Statement from the Heart, along with a Makarrata Commission for truth-telling and agreement-making.

It has the support of Australia’s biggest First People’s democratically elected body, the First People’s Assembly of Victoria, as well as the Coalition of Aboriginal and Torres Strait Islander Peak Organisations in addition to countless Indigenous organisations, unions, business, sporting bodies.

We know Australia is capable of a response that meets the spirit of the Uluru Statement from the Heart. We believe that the referendum should and will have the support of the majority of Australians.

In 2020, Professor Megan Davis delivered CPD’s John Menadue Oration, on the question of “Can Australia Deliver?”

As a member of the Prime Minister’s Referendum Council, Professor Davis was instrumental in the development of the Uluru Statement From the Heart, one of the most important Australian documents since Federation.

“It’s important that constitutional reform for First Nations people is regarded as a discrete and serious issue of public policy.”

*- Professor Megan Davis,
John Menadue Oration, 2020*



Professor Davis said, “It’s important that constitutional reform for First Nations people is regarded as a discrete and serious issue of public policy, like climate change, banking regulation or superannuation.” She concluded by saying, “It’s just time to bring it home.”

Our constitution was designed as a living document to incorporate changes on issues that go to the heart of our national identity and purpose as times change.

This year, Australia can choose to recognise Aboriginal and Torres Strait Islander people’s unbroken connection to Country according to the reckoning of Aboriginal culture, from the Creation, according to the common law from ‘time immemorial’, and according to science more than 60 millennia.

We can choose to embed a Voice for First Nations people in our nation’s foundational document.

We can choose to enrich our institutions with the knowledge, values and culture from 60,000 years of history.

This is a first step to fulfilling the vision of the Uluru Statement - of Voice, Treaty and Truth. To empower First Peoples to take their rightful place in a country where Aboriginal and Torres Strait Islander culture will be a gift to all Australians.

We must take this step to recognise our past, progress in the present, and create a future where we all flourish. In 2023, it’s just time to bring it home.

CPD understands that reconciliation with, and recognition of, First Peoples is a daily commitment. CPD is committed to undertaking this with humility and in conversation and relationship with First Peoples.

**Learn more,
volunteer
or donate at
Yes23.com.au**



SCAN ME



CREATING A NET ZERO FUTURE
Sustainable Economy Program

Charting a just, swift and orderly transition for Australia and the region

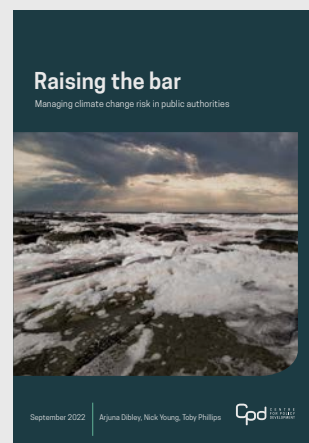
The past 12 months has seen important government breakthroughs including the creation of the Net Zero Authority and the announcement of climate risk rules, which have been informed by years of CPD work.

NET ZERO AUTHORITY AND DISCLOSURE REGIME

The announcement of a Net Zero Transition Authority in this year's Federal Budget reflects recommendations made over many years by CPD and partners in our sustainable economy work.

This will guide Australia's energy transition, help people and communities that rely on emissions-intensive industries to adapt, coordinate clean energy programs, and drive the uptake of net-zero opportunities by investors and companies.

In December 2022, the Treasurer announced that the government will establish mandatory climate disclosure rules for large businesses in Australia. These institutions will need to provide greater transparency on how they are responding to climate change and supporting the transition to net zero. This is something CPD has supported for many years as part of a change agenda in the way corporations and public authorities manage climate-related risks.



CLIMATE 2035 INITIATIVE AND PLACE-BASED TRANSITION

CPD's focus is now on the next horizon. The Climate and Recovery Initiative - a forum steered by CPD, Climateworks Centre, the ACTU, AiGroup and Pollination - has transformed into the 2035 Climate Initiative, which is building agreement on the actions needed to be taken now to reach ambitious 2035 targets consistent with limiting global warming to 1.5 degrees.

Leaders across government, business, finance and NGOs are examining abatement in heavy industry, investment in green sectors, and regulatory settings for the post-carbon economy.



A complete picture of risk and opportunity through a disclosure regime covering business and government

“CPD’s method and approach have created high-quality forums to amplify and embed climate research in Australia’s business, government and financial institutions. Together we are transforming insight into impact.”



- Anna Skarbek, CEO, Climateworks

PUTTING PEOPLE AFFECTED BY TRANSITION AT THE FRONT OF THE PACK

Research to ensure the regions of Australia most affected by transition lead the pack for opportunities continued this year. To support the work of the Net Zero Authority we have developed a framework to measure adaptive capacity in transition-exposed local economies.

This is a foundational component of targeted transition plans that build community capabilities and strengths in regions that previously relied on fossil fuel industries.

DRIVING CLIMATE DIPLOMACY BETWEEN REGIONAL POWERS

Our international work and sustainable economy program are deeply connected. CPD's Australia-Indonesia Energy Transition Policy Dialogue is a key forum for investors and public officials from the world's two largest coal exporters to confront policy challenges in cross-border investment and energy transition. Read more on this cross-program work on page 26.



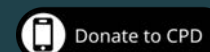
A Net Zero Authority to steer Australia's decarbonisation journey



Critical mass for aggressive, achievable 2035 targets consistent with 1.5 degrees



CPD is committed to helping Australia build a more environmentally and socially sustainable economy, and we need your support to make this vision a reality. Please consider a tax-deductible donation by visiting cpd.org.au/donate and help us build a more sustainable future.



UNLOCKING INNOVATIVE FINANCING SCHEMES AND ISLAMIC FINANCE TO ACCELERATE A JUST ENERGY TRANSITION IN EMERGING ECONOMIES



A SUSTAINABLE FUTURE BEYOND NATIONAL BORDERS

Australia & the Indo-Pacific Program

Fostering leadership and cooperation in the Indo Pacific

CPD's international work on forced migration and energy transition is solving the most urgent challenges facing our region.

EFFECTIVE RESPONSES TO FORCED MIGRATION

In February 2023 Adelaide hosted the first Ministerial meeting of the Bali Process since 2018. The co-Chairs triggered emergency measures to protect people seeking freedom from violence in Myanmar taking sea voyages in the Andaman Sea and Bay of Bengal.

CPD's Asia Dialogue on Forced Migration was instrumental in this decision, the development of the emergency measures themselves, and their first use in 2017.

We briefed co-Chairs Penny Wong and Retno Masurdi, as well as more than 20 Australian, Indonesian and regional officials. Public advocacy in the Sydney Morning Herald, The Australian, the Diplomat, Lowy Interpreter and ABC Radio National supported this work.

It built on 2022's Future Ready report which called for eight key reforms. The pathway this report proposed was echoed by UN agencies and civil society ahead of the Adelaide meeting.

We are assisting regional governments to coordinate search and rescue missions, provide resettlement, and to preempt and prevent further crises. CPD also continued to advance alternatives to detention in our region with partners in Australia, Indonesia, Malaysia, New Zealand and Thailand.



CREATING SWIFT, SAFE PATHS TO RESETTLEMENT

Our collaborative efforts with regional partners, as well as those from the US and Canada, have paved the way for more efficient and transparent resettlement procedures. The collaboration between experts, academics, and government representatives in our work on resettlement is driving a substantial impact, fostering improved pathways and responses to forced migration crises.

Insights gleaned from the rapid response to the Taliban takeover in Afghanistan, combined with our comprehensive program recommendations for clearer pathways to permanent residency, have become instrumental in reshaping the resettlement landscape.

By facilitating the exchange of information and best practices among major resettling nations, CPD is at the forefront of innovative refugee resettlement strategies.



REGIONAL COLLABORATION ON CLEAN ENERGY TRANSITION

In 2022 CPD hosted a G20 event on energy transition, which heard from Indonesia's Vice-President Ma'ruf Amin, and cabinet ministers holding the energy and finance portfolios, alongside global leaders in decarbonisation. Some of the recommendations of our event on energy transition financing were included in the final Bali Compact endorsed by G20 leaders and also influenced aspects of the breakthrough \$20 billion Just Energy Transition Plan for Indonesia.

CPD has also established the Australia-Indonesia Energy Transition Policy Dialogue, a standing dialogue of officials from both countries solving policy challenges to decarbonisation - see page 23 for more detail.

On the basis of this success CPD has been chosen as energy sector partner of Indonesia as 2023 ASEAN Chair

"In just a year, CPD has built solid works to enhance the coalition in Indonesia, and nurtured the Australia-Indonesia relationship. CPD enriches ideas to support just transition in Indonesia and we're looking forward to working closely with them in the near future."



- Yudo Dwinanda Priaadi, Chair Energy Transition Working Group Indonesia's G20 Presidency 2022 & Senior Advisor to Minister of Energy and Mineral Resources.



Faster paths to permanent resettlement developed



UN, civil society endorse eight-step Future Ready reform pathway

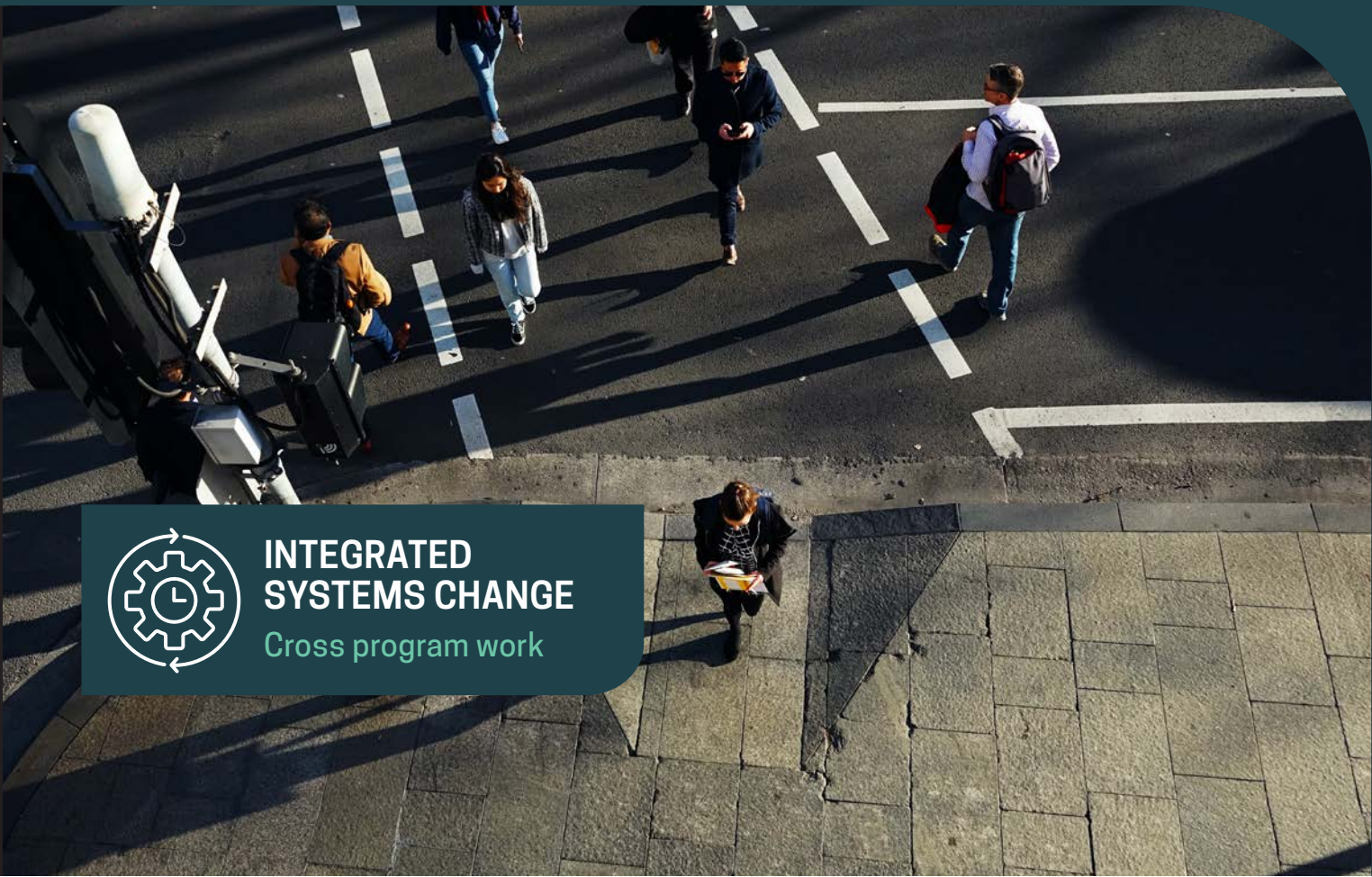


Bali Process activates emergency response to Myanmar refugee crisis

CPD is the only policy institute working both domestically and internationally to solve the toughest policy challenges facing Australia and the region. Join our mission by making a tax-deductible donation to CPD at cpd.org.au/donate. Every contribution helps us to continue our work and make a positive impact in the world.



Donate to CPD



INTEGRATED SYSTEMS CHANGE
Cross program work

Breaking down silos to unlock long-term progress

Good public policy takes an integrated approach that breaks down silos to create new ground. Our work connects policy areas to accelerate momentum and deepen impact.

MAKING EMPLOYMENT WORK FOR PEOPLE AND COMMUNITIES

Our advice to Treasury following the Jobs and Skills Summit drew on CPD's expertise across early childhood, place-based systems reform, wellbeing governance and climate transition. This provided firm direction backed by specialist research for long-term, effective and connected policy solutions.

This includes investing in the care economy to capture productivity gains, which the recent Budget emphasised.

We recommended the Net Zero Authority so people affected by industrial transition lead the pack for new jobs and opportunities. This was announced in April.

We advised reform of Australia's employment system to align incentives for providers with community capabilities to lift up people who are excluded from the labour market. This is the subject of the Workforce Australia Inquiry.



Three budget initiatives connecting government, NGO and philanthropic sectors targeting integrated systems change to better support people and communities experiencing disadvantage

ACCELERATING THE INDO-PACIFIC CLIMATE TRANSITION

We are building the sustainable economy beyond Australia's borders.

In 2022 we led a G20 event on catalysing finance for sustainable climate transition infrastructure across the Indo-Pacific Region. This event featured addresses from the Indonesian Vice-President, Finance Minister and Energy Minister, and global leaders in climate science, sustainable finance, and international politics. Some of the recommendations of the event were included in the final Bali Compact endorsed by G20 leaders and also influenced aspects of the breakthrough \$20 billion Just Energy Transition Plan for Indonesia

This marked the commencement of an enduring policy dialogue between regulators, public officials, investors and leaders in both Australia and Indonesia. We have organised several subsequent roundtables bringing together key decision-makers from both countries. In 2023, as a formal ASEAN energy transition partner, CPD will work with Indonesia as Chair of ASEAN to maximise energy transition opportunities in the region.

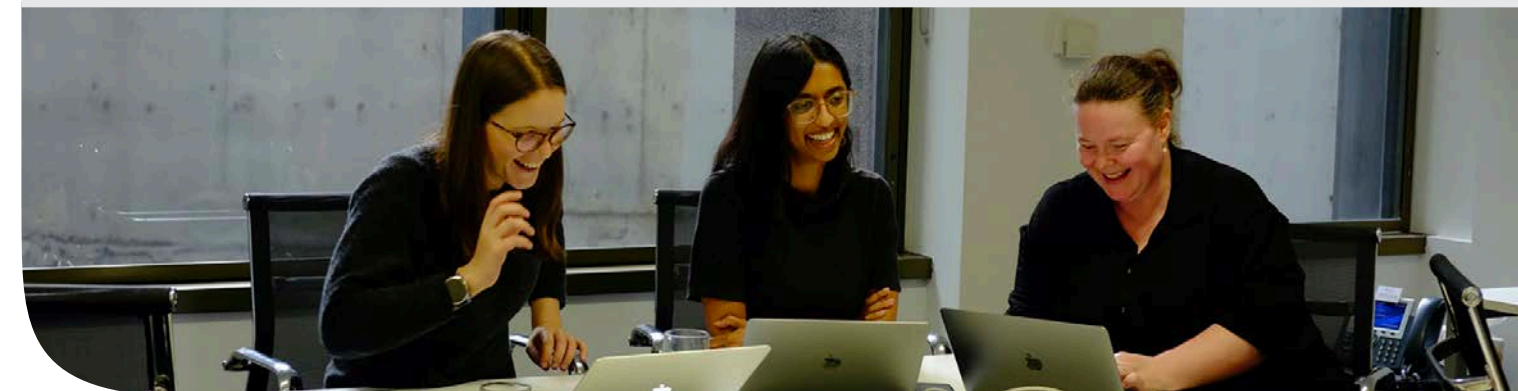
STRENGTHENING COMMUNITIES WITH POLICY INNOVATION

A people- and place-centred lens on government service systems supports wellbeing at a local level. This approach has been a strong focus on CPD's work for many years.

Renewed interest at a Commonwealth level provides the opportunity to scale these approaches and embed them in reforms to areas as diverse as employment, climate transition, early childhood and migration.

The 2023 Federal Budget announced three initiatives closely aligned with this approach - the Investment Dialogue for Australia's Children, the Stronger Places, Stronger People program and the Social Impact Outcomes Fund.

We will work closely with these initiatives, bringing rigorous cross-disciplinary analysis, urging ambition for enduring reforms and providing supportive evidence-based guidance on best practice.

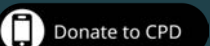


Workforce Australia Inquiry provides an opportunity to reform the employment service system to be more people and place-centred.



Australia and Indonesia cooperating on climate transition through enduring dialogue with key decision-makers from both countries

Our ability to work across disciplines, combining our knowledge and expertise to produce tangible policy outcomes, relies on the support of donors. Please consider supporting our work to help bring about a more sustainable, fair and just future for Australia and our region. All donations are tax-deductible.



CPD'S ORGANISATIONAL CULTURE

The guiding principles of our organisation facilitate cooperation and motivate us to produce impactful, lasting changes.

The people who bring Create-Connect-Convince to life share a special bond.

As our team grows across Australia and beyond, we are holding onto the unique culture that guides our collaboration. We are:



Grounded and caring

grounded in the pursuit of wellbeing

kind and compassionate colleagues and collaborators, creating an inclusive and welcoming workplace



Courageous and confident

courageous with our contribution, but humble in the way we engage

believers in ourselves, each other, and our approach and method



Collaborative and consultative

natural collaborators who seek to unite rather than divide

connectors, building synergies across teams, workstreams, organisations, sectors and issues



Intellectually rigorous and solutions focused

intellectually rigorous, inviting curiosity and initiative

pragmatic reformists, putting forward practical, implementable solutions



Trusted, credible and reliable

known for doing what we say we will do

evidence-based and thoughtful — people know they can trust what we say and write



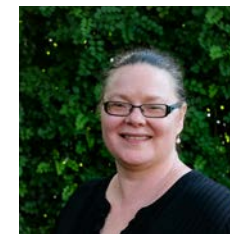
Fun and positive

fun and try not to take ourselves too seriously

quick to assume good will and the best intentions



OUR TEAM



Allison Orr, COO



Andrew Hudson, CEO



Annabel Brown, Deputy CEO



Byron Mawanda, Finance Officer



Caitlin McCaffrie, Program Director



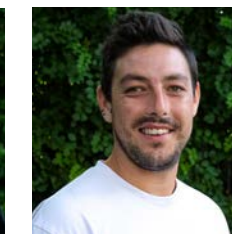
Christy Kumesan, Program Coordinator



Cliff Eberly, Program Director



Cressida Gaukroger, Senior Policy Adviser



Curtis Moore, Communications Coordinator



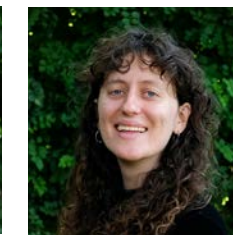
Dennis Venning, Senior Policy Adviser



Diana Bowles, Policy Adviser



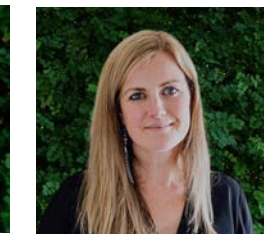
Esther Koh, Program Officer



Georgia Wilkinson, Policy Adviser



Jess Drake, Policy Adviser



Katherine Trebeck - Strategic Adviser



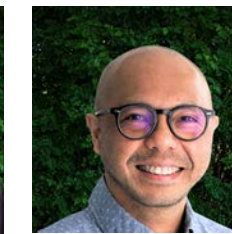
Lachlan Williams, Communications Director



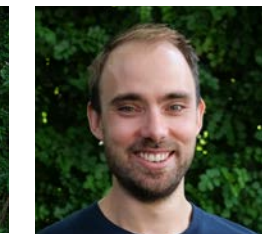
Mara Hammerle, Economic Adviser



Nicky Woods, Executive Assistant



Ruddy Gobel, Senior Policy Adviser



Toby Phillips, Program Director

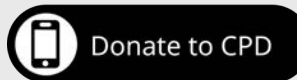


Warwick Smith, Program Director



Wenqian Gan, Policy Adviser

INVEST IN IMPACT



Join us in tackling Australia's toughest policy challenges for a fair, sustainable, inclusive future.

As CPD has grown over the years, so has the scale of our impact on the Australian policy landscape, where we've played a pivotal role in shaping policy and systems change that reflects the nation's long-term interests.

Our team not only designs new policies but also reevaluates how these policies are executed. We believe that modifying the systems where these policies function can secure enduring change. We embrace the inclusion of non-traditional stakeholders, and work to connect decision-makers, experts and those with lived experience in order to devise the most effective methods of implementation.

We have achieved a lot in the last year alone, but we remain focused on the long-term.

Imagine a society that fosters equal opportunity and justice, an economy powered by clean, innovative, and productive solutions, a government that is effective and proactive, and a nation renowned for its leadership and cooperation. This is the future we envision at CPD, and with your support, we can make it a reality.

Our achievements have been possible thanks to the generosity and unwavering support from our valued donors who share our vision for a more just, sustainable, and prosperous future.

Your generous donations, whether from philanthropic foundations, individuals, or families, are the lifeblood that enables us to continue our mission of addressing the most pressing policy challenges Australia and the region face.

By making a tax-deductible donation to CPD, you are not only investing in a brighter future for Australia and the region, but also making a tangible impact on the policy environment and, ultimately, on the lives of millions of Australians. Together, we can create the future we all deserve.

OUR SUPPORTERS





ABOUT CPD

The Centre for Policy Development (CPD) is an independent, values-driven, and evidence-based policy institute. Our motivation is an Australia that embraces the long term now. CPD exists to solve the biggest policy challenges facing Australia and the region, and to take people on the journey solving them. Our policy development seeks to advance the wellbeing of current and future generations.

CPD's core model is three-fold: we create viable ideas from rigorous, cross-disciplinary research at home and abroad. We connect experts and stakeholders to develop these ideas into practical policy proposals. We then work to convince governments, businesses, and communities to implement these proposals. CPD has team members based in Melbourne, Canberra, Sydney and Jakarta.

Published by the Centre for Policy Development © Centre for Policy Development 2023

CONNECT WITH US

-  @centrepolicydev
-  centrepolicydev
-  Centre for Policy Development
-  Cpd.org.au

CONTACT

Melbourne
Level 16, 1 Nicholson Street,
East Melbourne VIC 3002

Sydney
Level 5/320 Pitt St,
Sydney NSW 2000